

MGD

MOLLY GILDAR DESIGNS
ARCHITECTURE PORTFOLIO

SELECTED WORKS

01 HYBRID-MIXED

02 AQUATIC CENTER

03 POOL PARTY

04 ACCESSORY DWELLING UNIT

HYBRID-MIXED

Fall 2023

Location: Logan Square, Chicago, Illinois

Programs: AutoCAD, Rhino, Adobe Suites, Enscape

Course: Architecture Studio III: Housing Studio-Mixed Hybrids

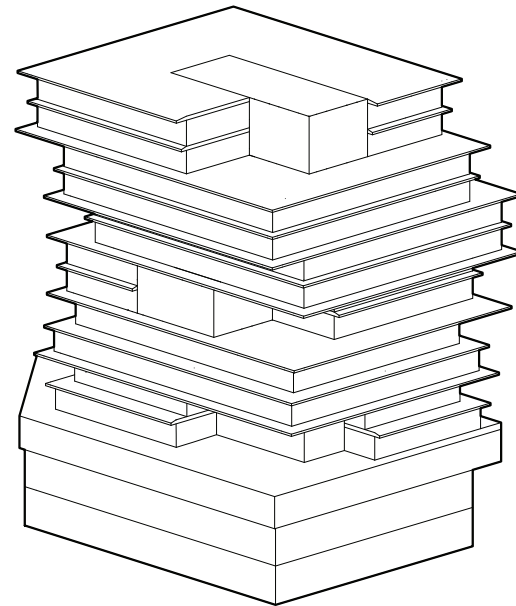
Group: M. Fabboli, A. Johannsson, M. Giron

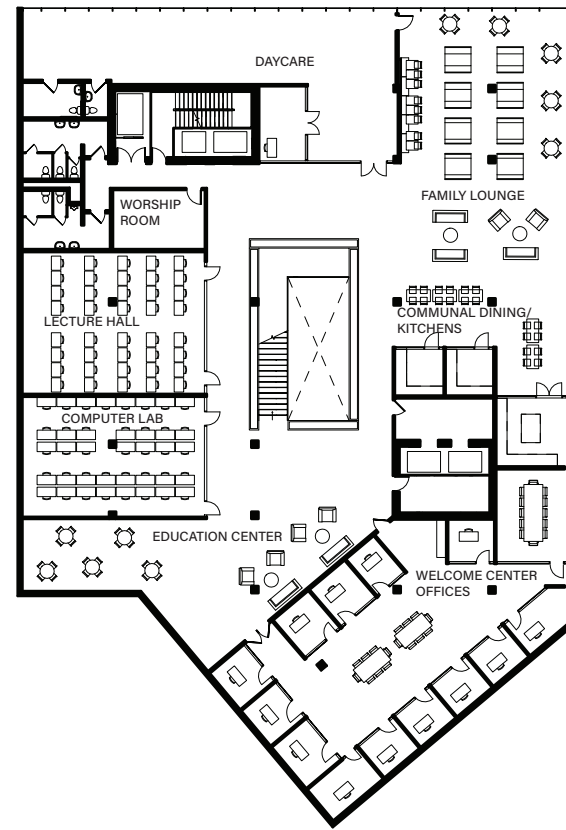
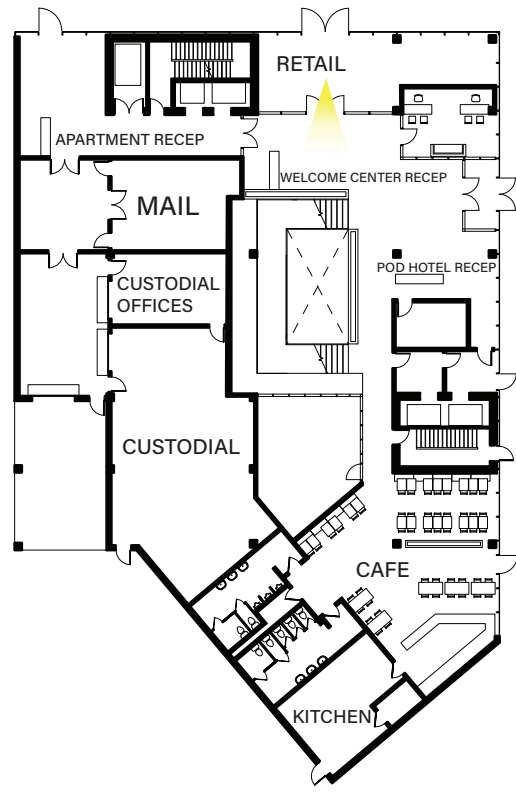
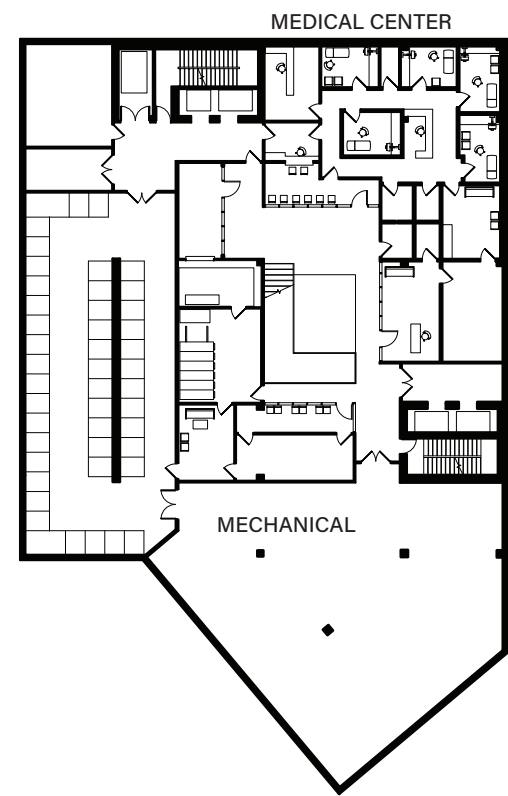
This mixed-use development is comprised of a dynamic arrangement of shifting masses encircling a continuous central atrium. The tower seamlessly integrates diverse functions, encompassing retail spaces, market-rate housing, a pod hotel, and a migrant welcome center. The project fosters meaningful connections among its varied uses and users through a design that emphasizes active interior spaces.

The interplay between the atrium and the floor plate offsets results in the creation of a series of distinctive interior and exterior terraces. These spaces vary in size, noise levels, lighting, privacy, program, and user experience, contributing to the overall diversity within the structure.

In relation to Logan Square and each other, these strategically positioned terraces serve as vibrant backdrops for inhabitants to engage in a lively and enriching public life just steps away from their residences.

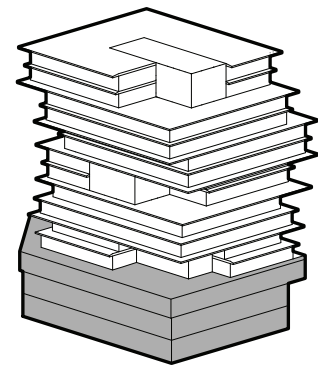
Guided by the core concept of "Secured," the project delves into the dual nature of security—both as physical protection and as a network of connections. Recognizing that personal security relies on relationships and support systems, the goal is to strike a balance between insulation and connection, avoiding isolation.





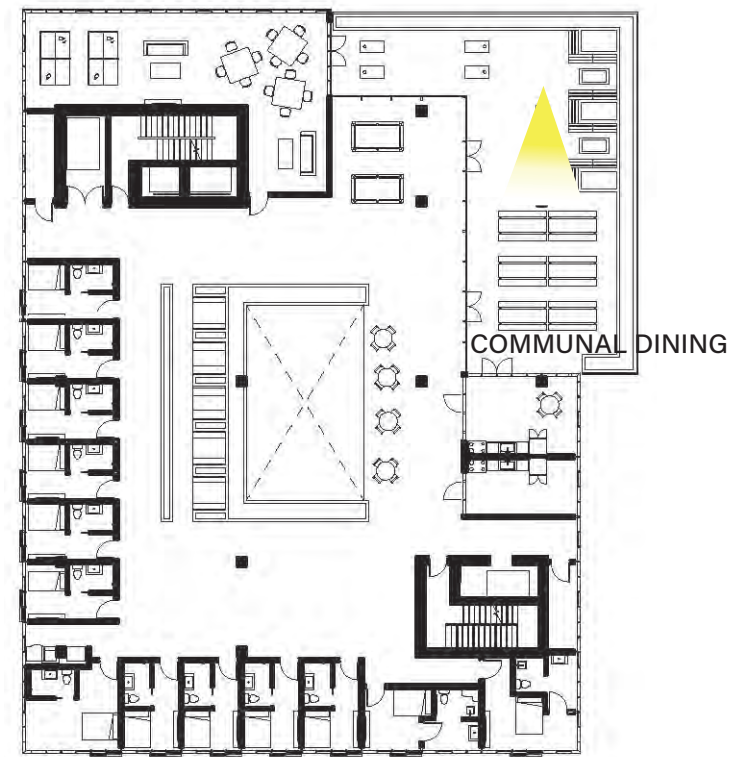
BASEMENT, GROUND & SECOND LEVEL 

0 5 10 25 50 100

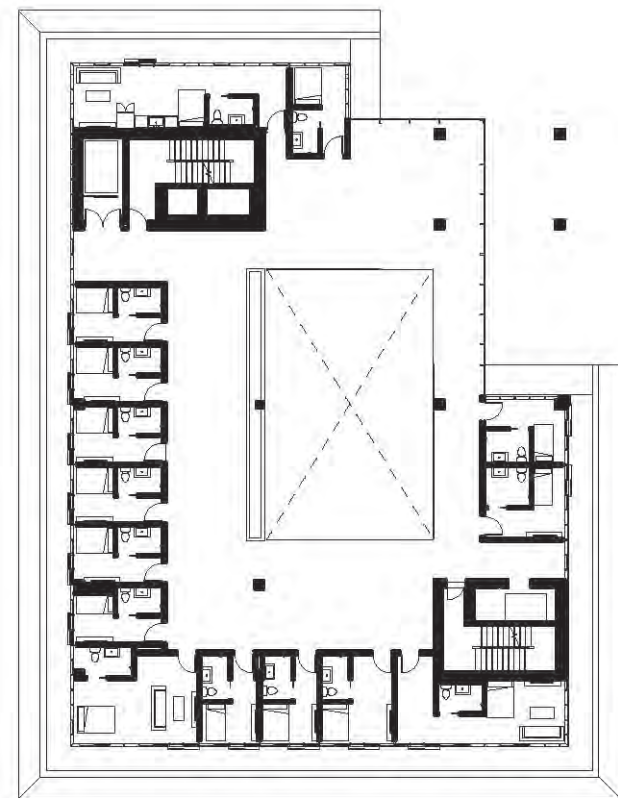


ENTRANCE | RECEPTION

GAME ROOM/LOUNGE

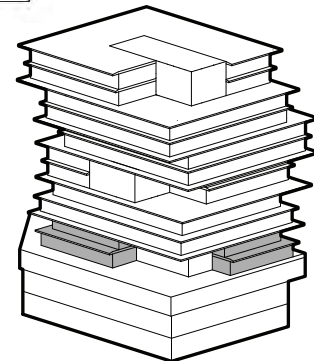


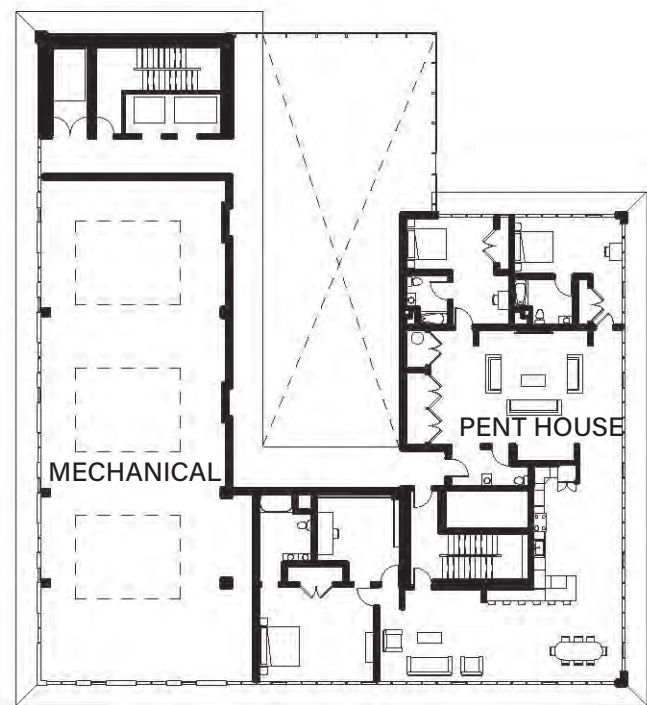
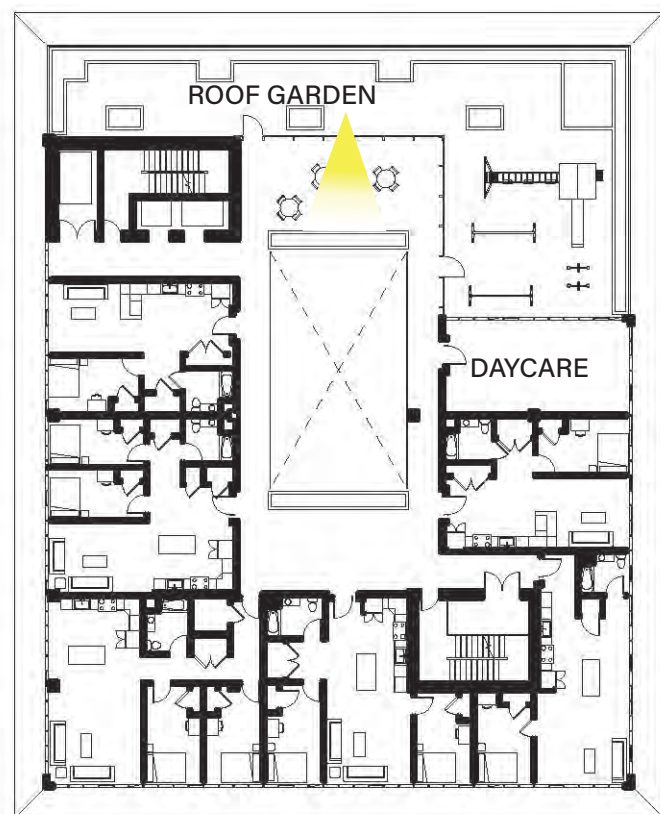
COMMUNAL DINING



POD HOTEL FLOORS 03 & 04 ⌚

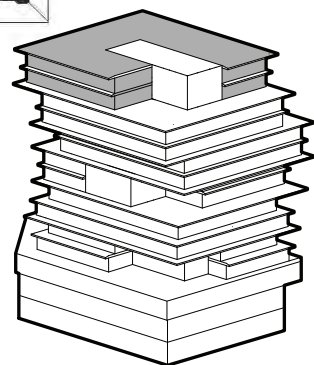
1/32" = 1' - 0"





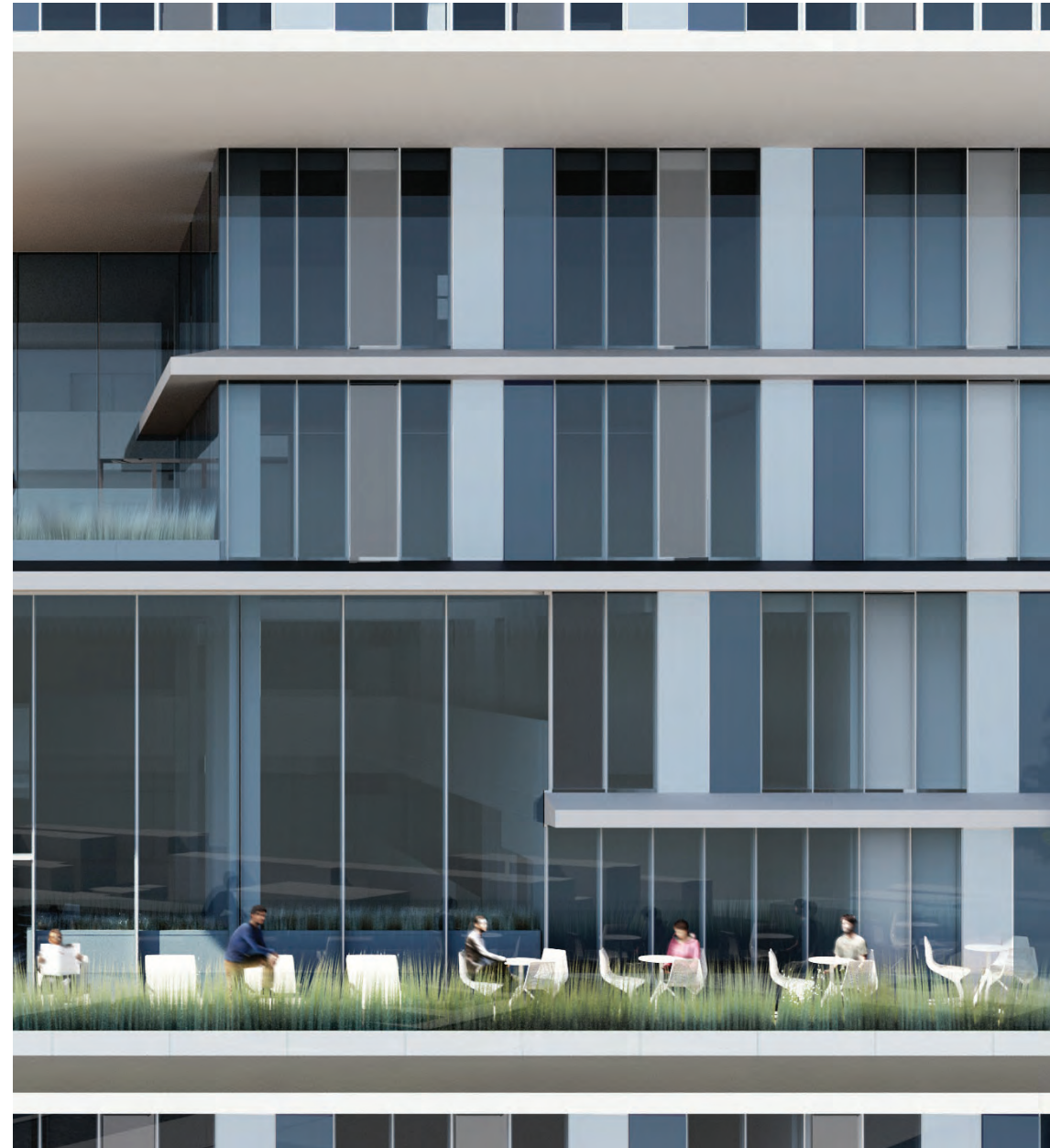
APARTMENT FLOORS 13 & 14 ⌚

1/32" = 1' - 0"



The main articulation of the facade is the variation of different panels within an overarching window wall system. Three modules are used for their varied characteristics: the transparent IGU panels provide daylighting and stellar views to the interior spaces, while the translucent and opaque panels offer varying degrees of privacy and insulation. The translucent panels are frosted with a modest level of insulation achieved through use of a thickened glass system with an aerogel fill between the panes, while the highest degree of privacy is granted at the opaque panels through the use of back-painted glass. These panels obscure the interior and give the facade moments of muted color while still maintaining the glass' reflectivity when viewed from the street. This choice also permits for up to 4" of rigid insulation to be placed behind these panels, significantly increasing the thermal performance of the facade as a whole.

The interplay between these three panel types is intended to read as a dynamic texture, complementing the strong horizontal lines of the fins by providing a rich and varied backdrop. The texture also varies slightly between the apartment and pod hotel floors, to allow for more seamless coordination between the facade and the interiors and to provide an honest expression of the range of programs contained within the building.



APARTMENT FACADE ARTICULATION



POD HOTEL FACADE ARTICULATION

AQUATIC CENTER

Spring 2023

Location: North Avenue Beach, Chicago, Illinois

Programs: AutoCAD, Rhino, Adobe Illustrator

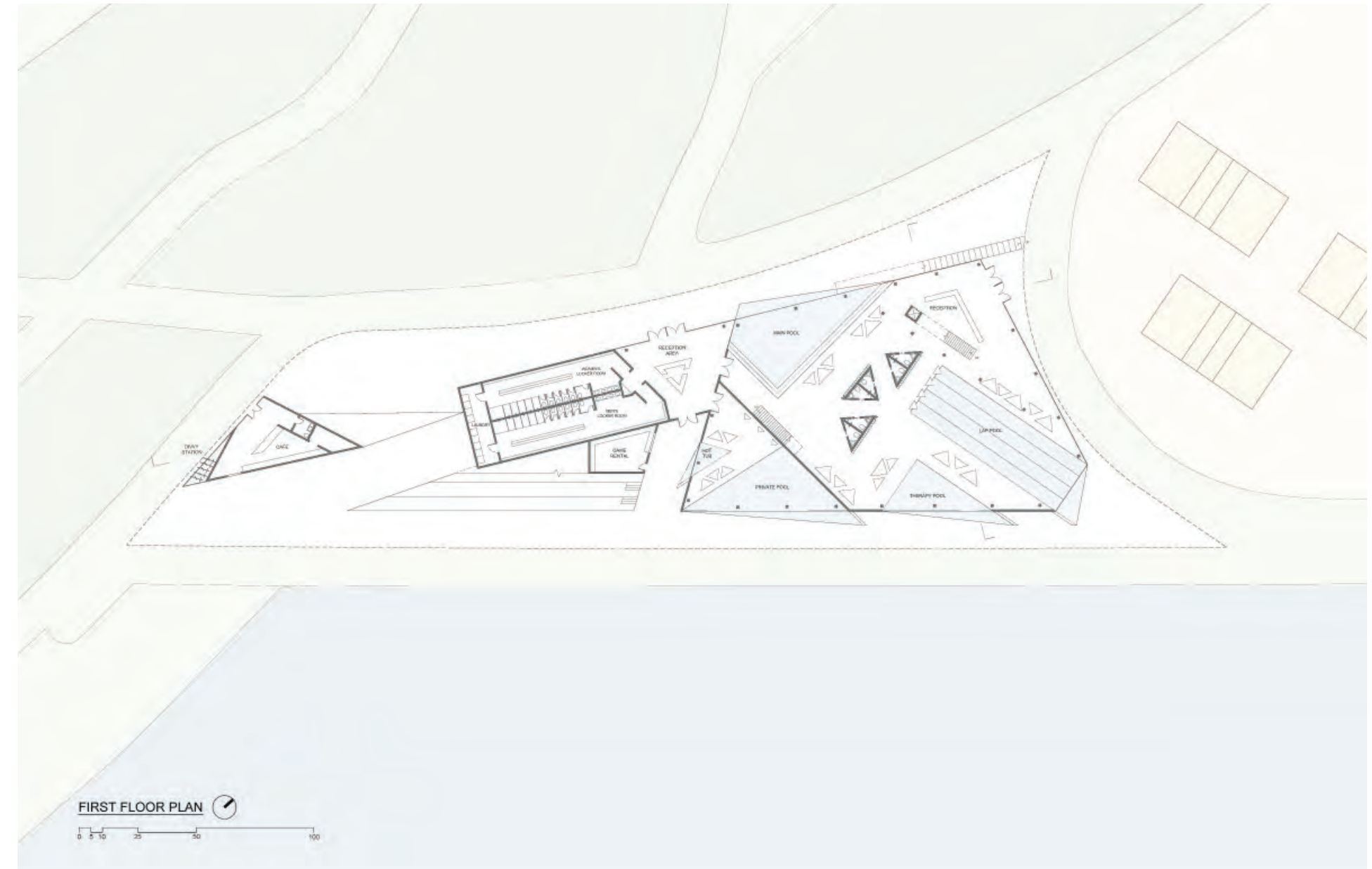
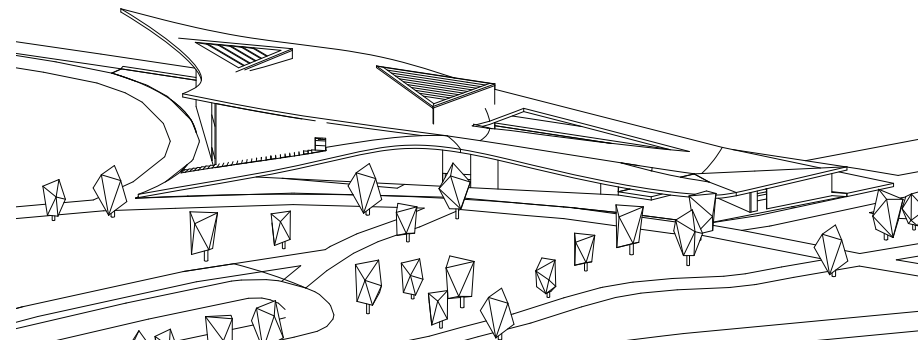
Course: Architecture Studio II: Architecture and the City

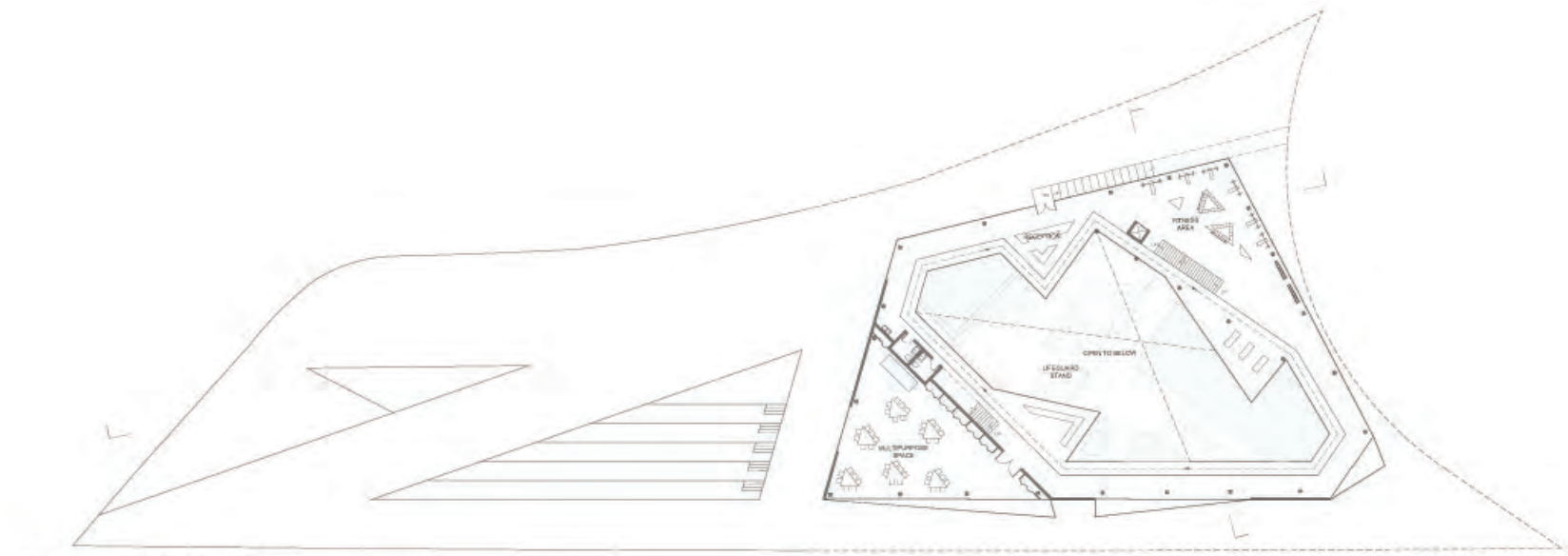
Group: L. Kadlec

The Canopy is an aquatic center located along Lake Shore Trail on North Avenue Beach in Chicago. The Lake Shore Trail exists on the principle of keeping the area public and open to all. The site is one of the few grassy areas located along the lakefront trail and is used for various recreational activities and as a gathering place.

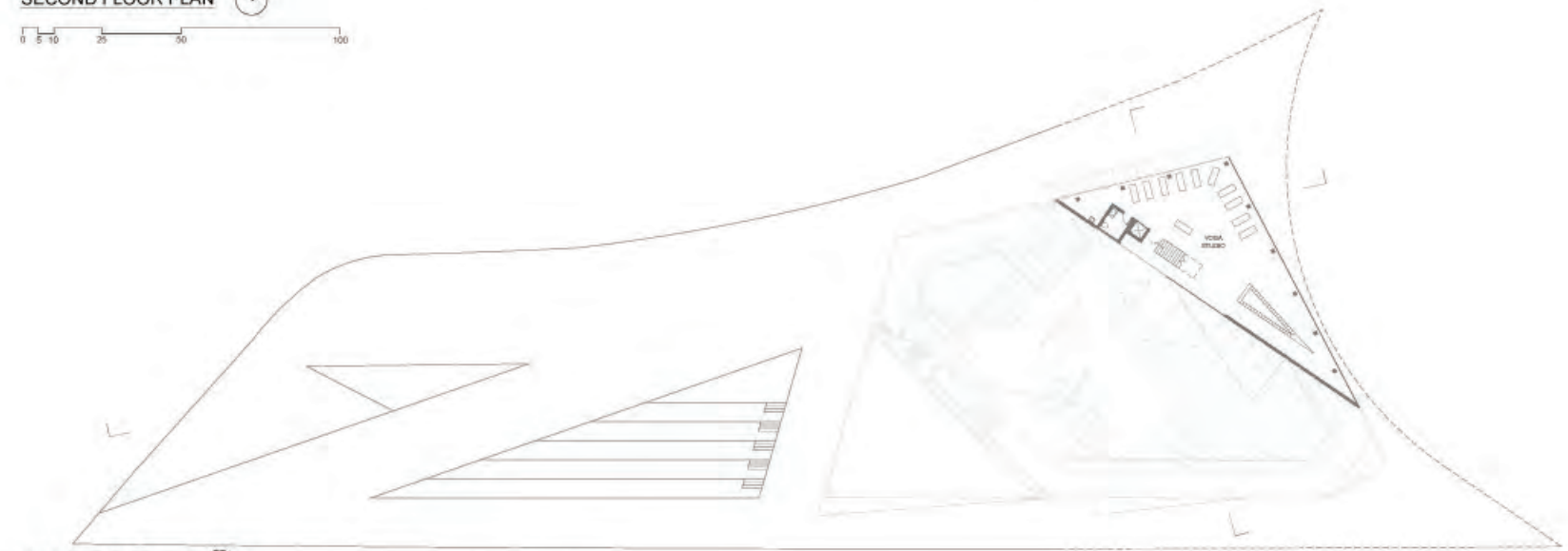
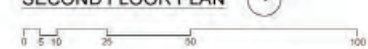
The design of The Canopy starts by lifting the site and sweeping the architecture underneath. The lifting of the site is intentional to preserve the original use of the site.

The concept of The Canopy places an emphasis on merging landscape and hardscape while working with the flow of the existing trails. A system was created that can change overtime and provides opportunities for use without suggesting too strictly as to what they are. The design accomplishes this by lifting and peeling the canopy on opposite sides to create an extension of the trail. Additionally, replicating the scenic ledge along the water to a higher elevation was included. The Canopy fosters a separate yet complimentary balance with the architecture underneath, through the use of two different languages. The canopy is curvilinear with the site, while the architecture and interior is angular.

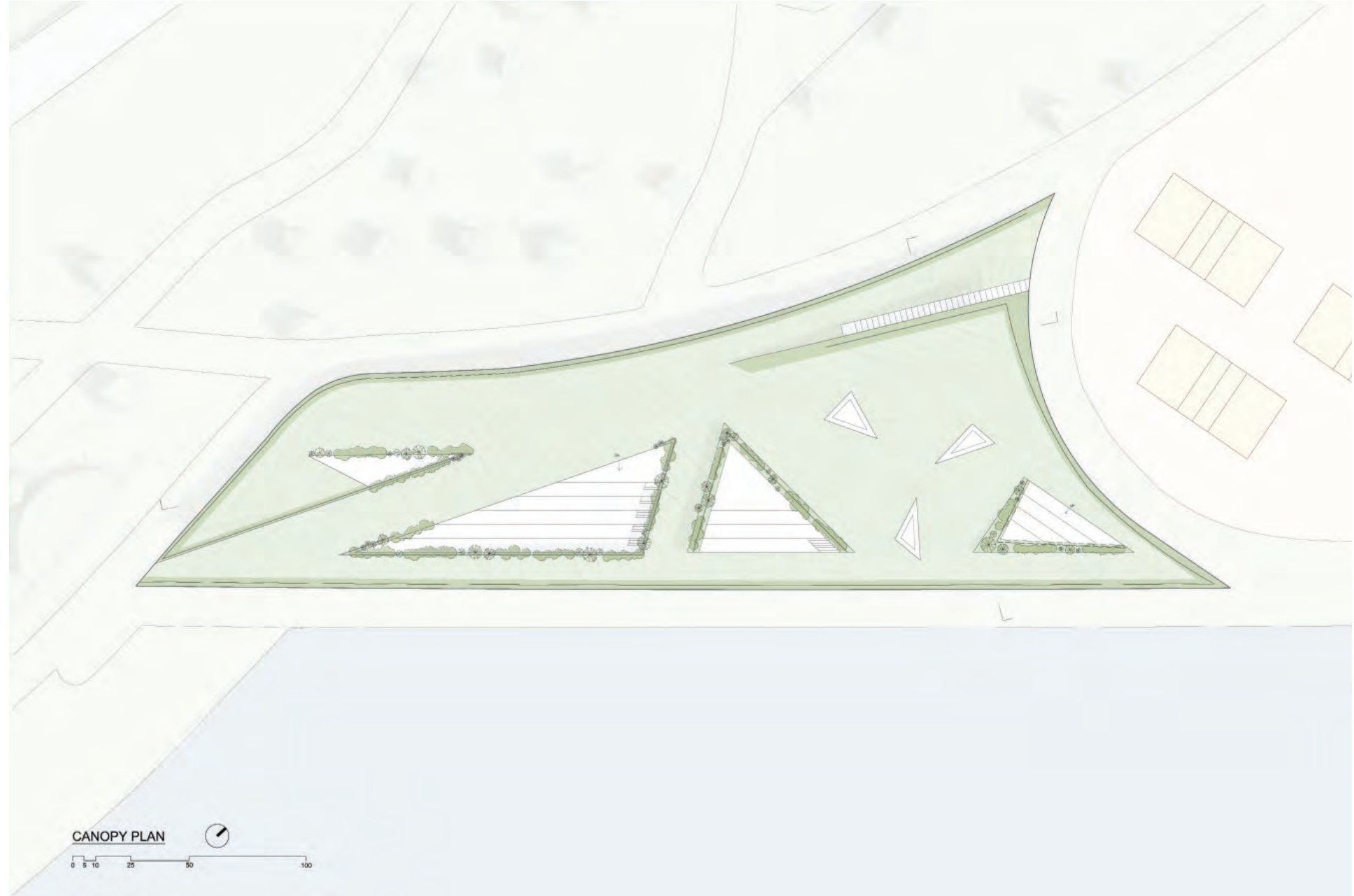
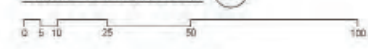




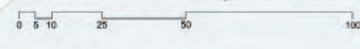
SECOND FLOOR PLAN



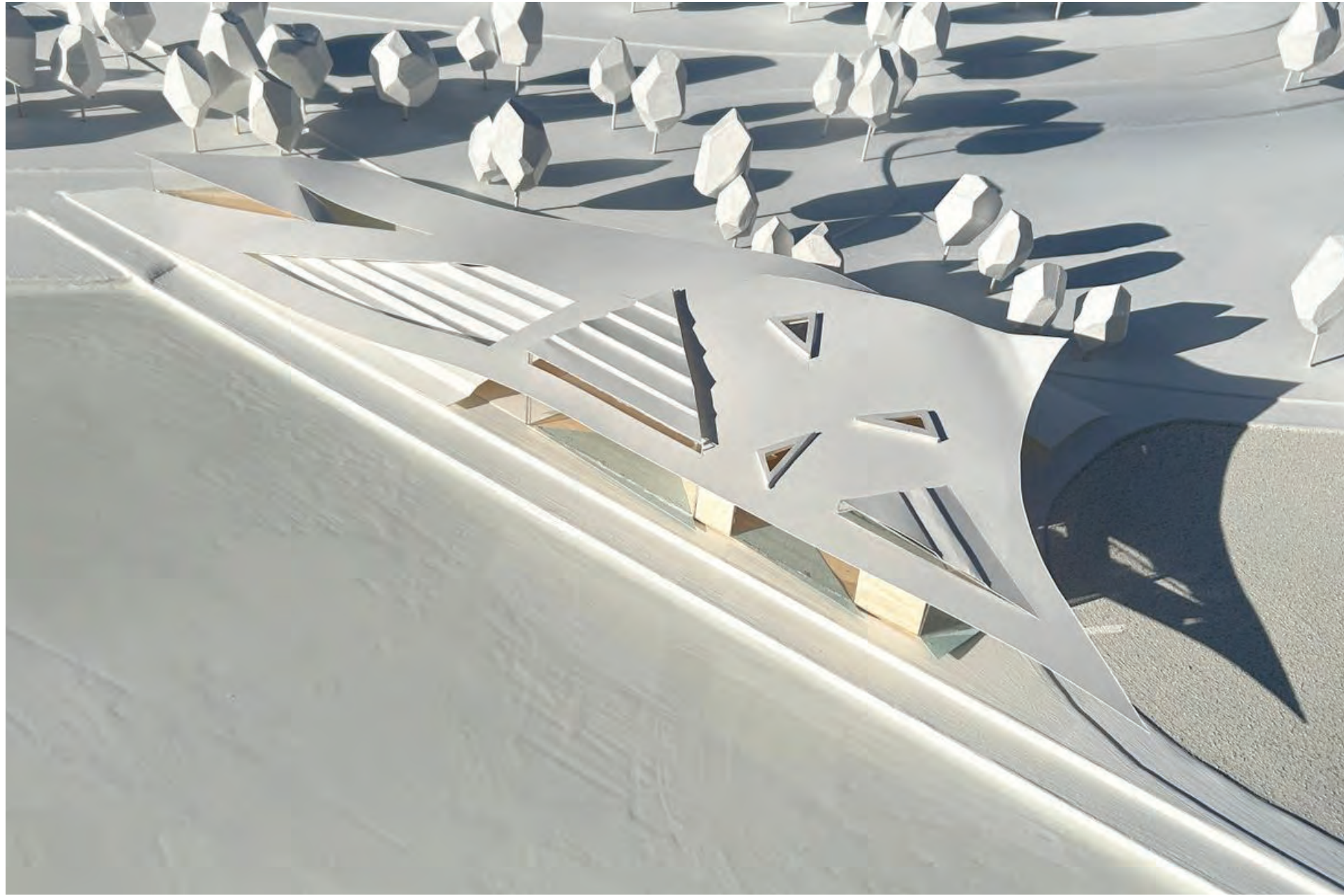
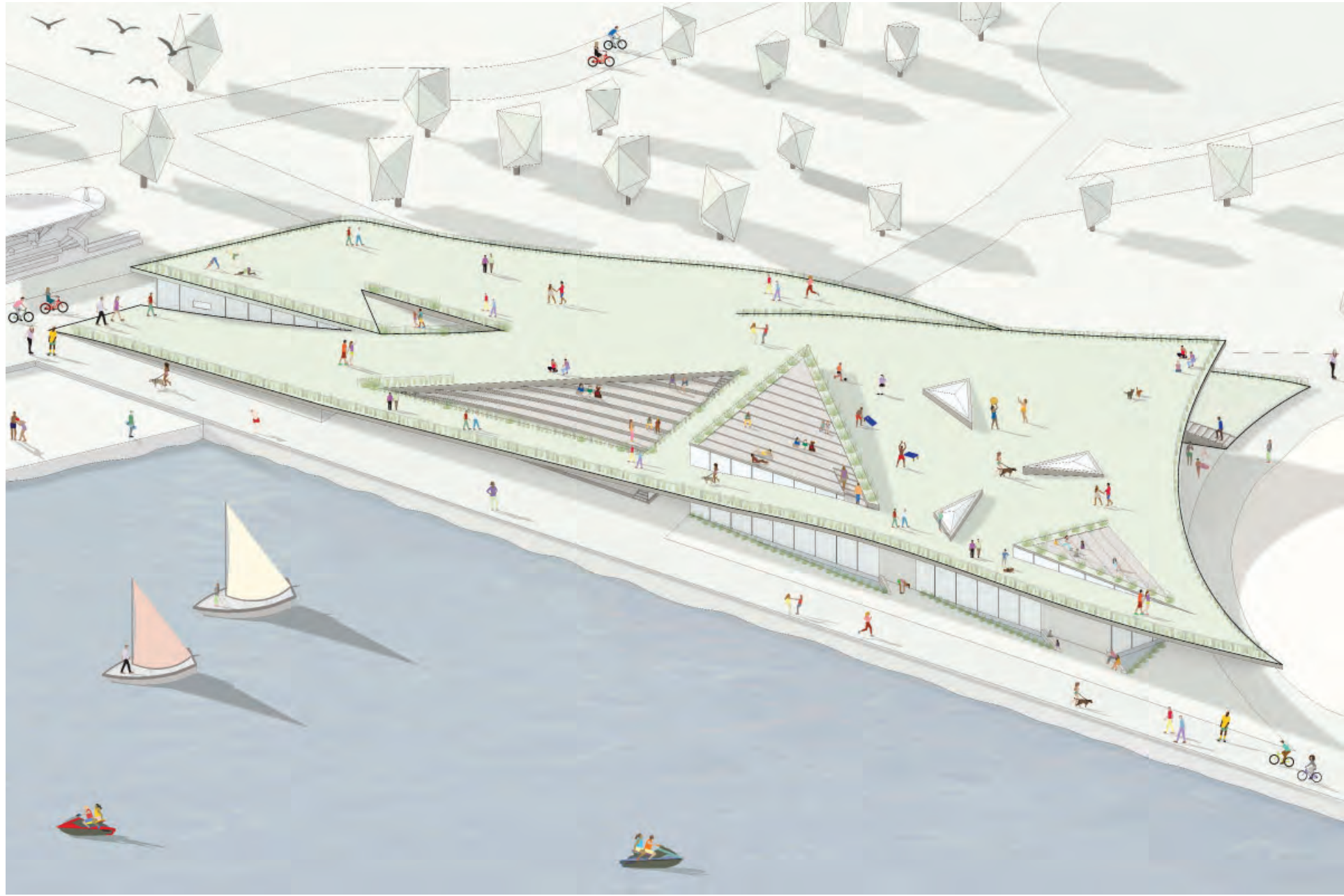
THIRD FLOOR PLAN



CANOPY PLAN







POOL PARTY

Spring 2023

Location: Los Angeles, California

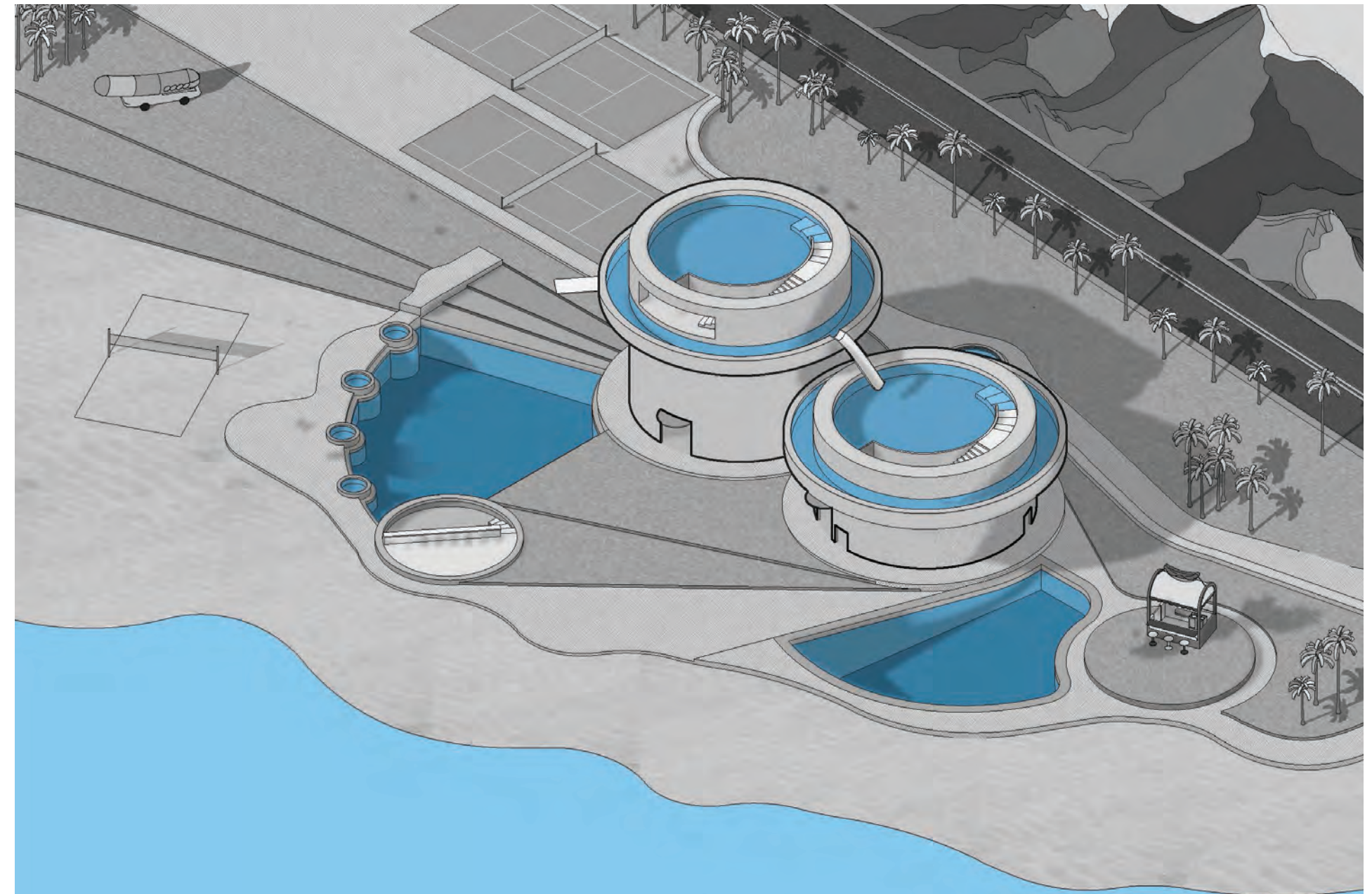
Programs: AutoCAD, Rhino, Adobe Illustrator

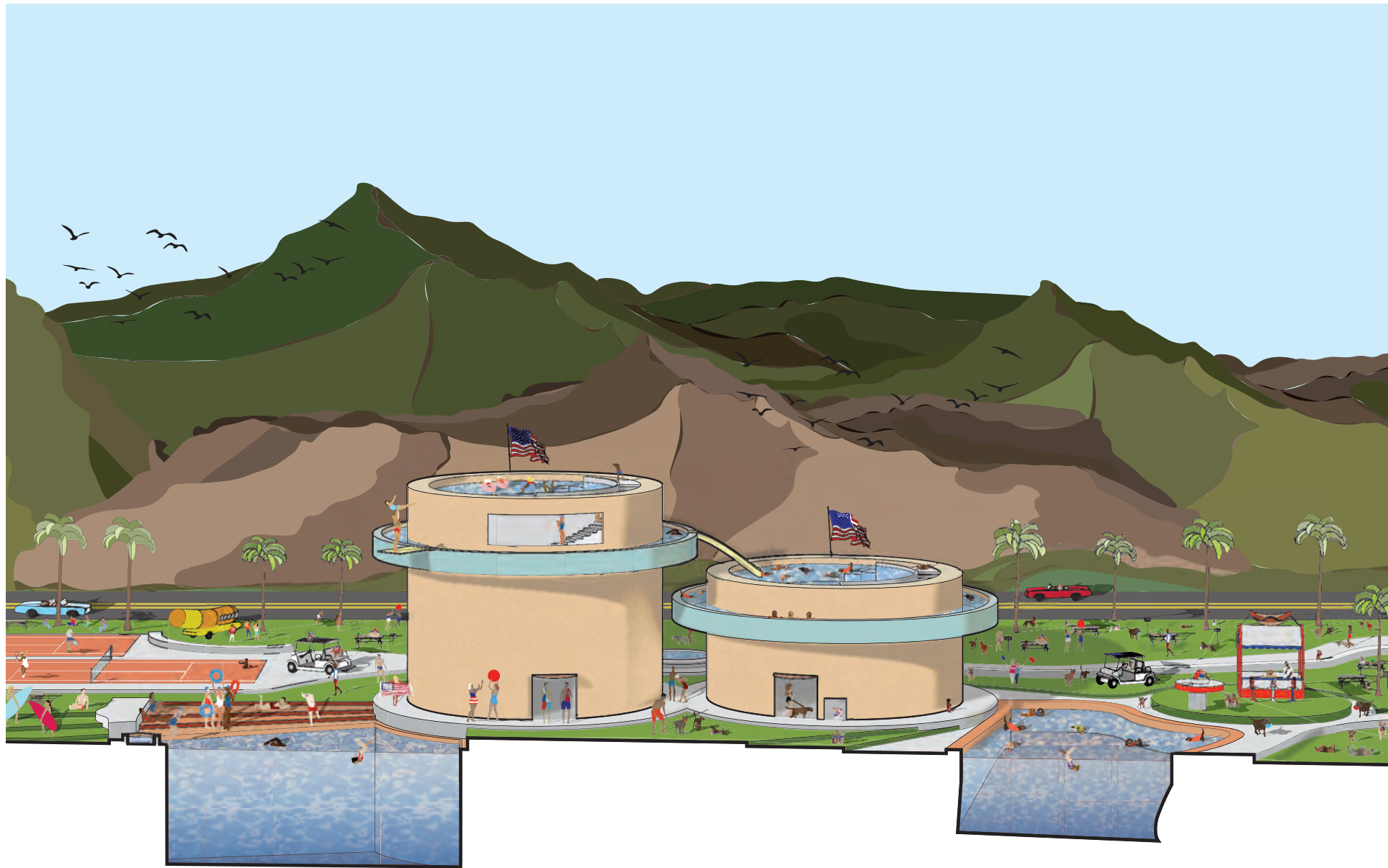
Course: Architecture Studio II: Architecture and the City

Group: L. Kadlec

This project explores the relationship between a site activity and graphic representation, the results are an axonometric drawing and a section perspective. The pool scene has a given activity, a fourth of July barbecue along with the given graphical precedent of David Hockney's, Pool with Two Figures.

The pool scene is a beach club located in Los Angeles, California which features programming for dogs and people. There are two main buildings that are the focal point of the illustration, one houses the main programming needs for people: locker rooms, dining, ect. , and the other building functions as a dog spa. The pools are designed to flow off of the main architecture and lead to the crowded beach. The texture and color palette are inspired from different Hockney paintings and in order to bring the activity of a fourth of July Barbeque to life, large grassy areas for picnics and outdoor games are included along with hot dog stands and figures dressed up for the holiday.





ACCESSORY DWELLING UNIT

Fall 2022

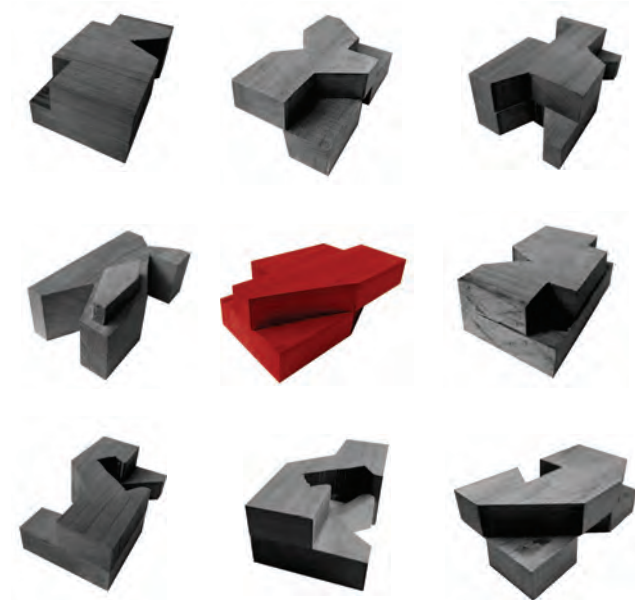
Location: North Avenue Beach, Chicago, Illinois

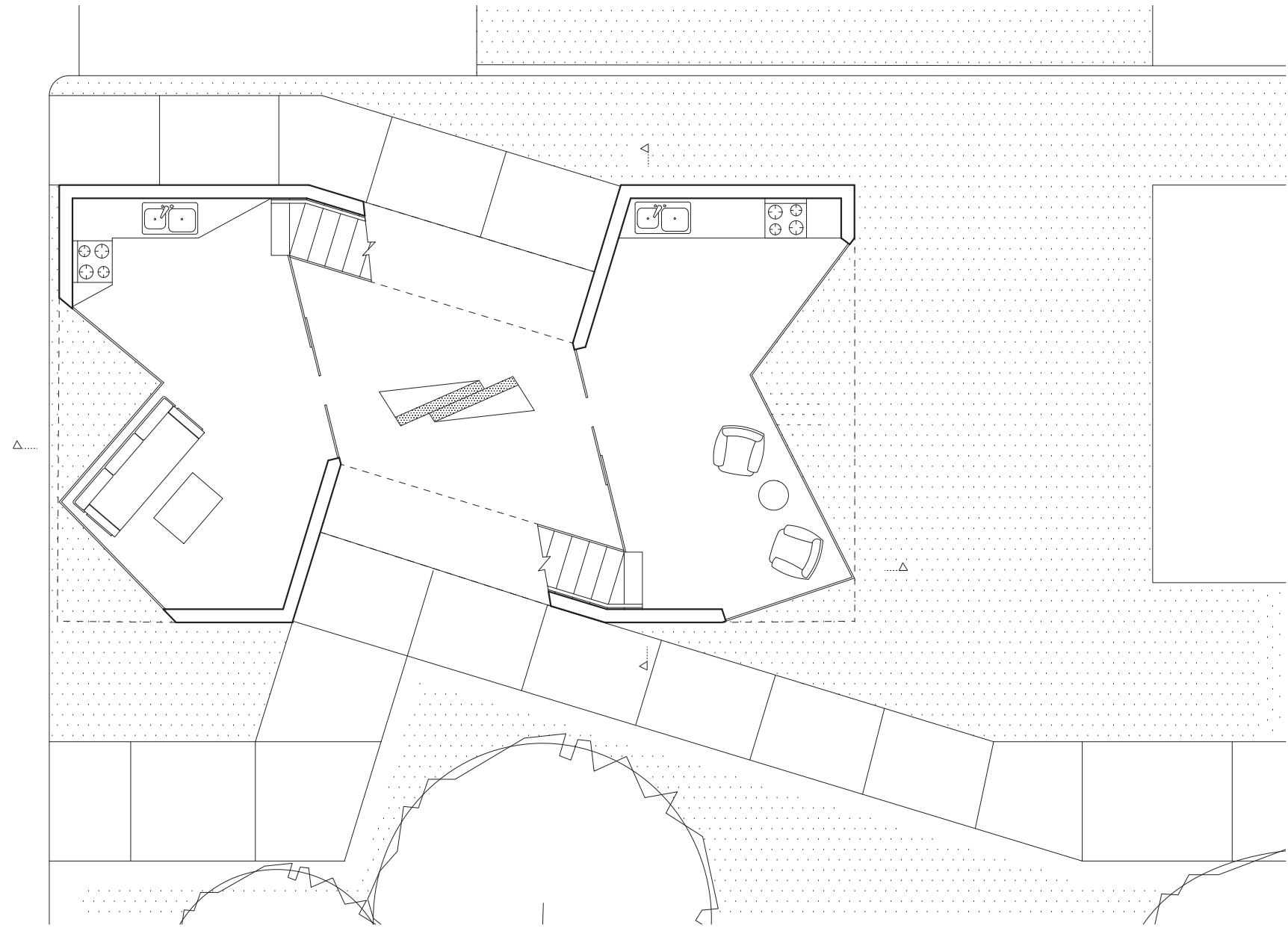
Programs: AutoCAD, Rhino, Adobe Illustrator

Course: Architecture Studio II: Architecture and the City

This Accessory dwelling unit is located on a typical Chicago block. The premise for the design is a double-unit. The final form was created using multiple smaller wood blocks and extracting voids in both the first and second floor to find the best moments to use in the final architecture. In the final model there are voids taken out of the first floor that create spaces for landscaping on the exterior while also dividing the space on the interior for different programming needs. Similarly on the second level there are voids that create a terrace for greenery along with balconies that lead to stairs for the rooftop.

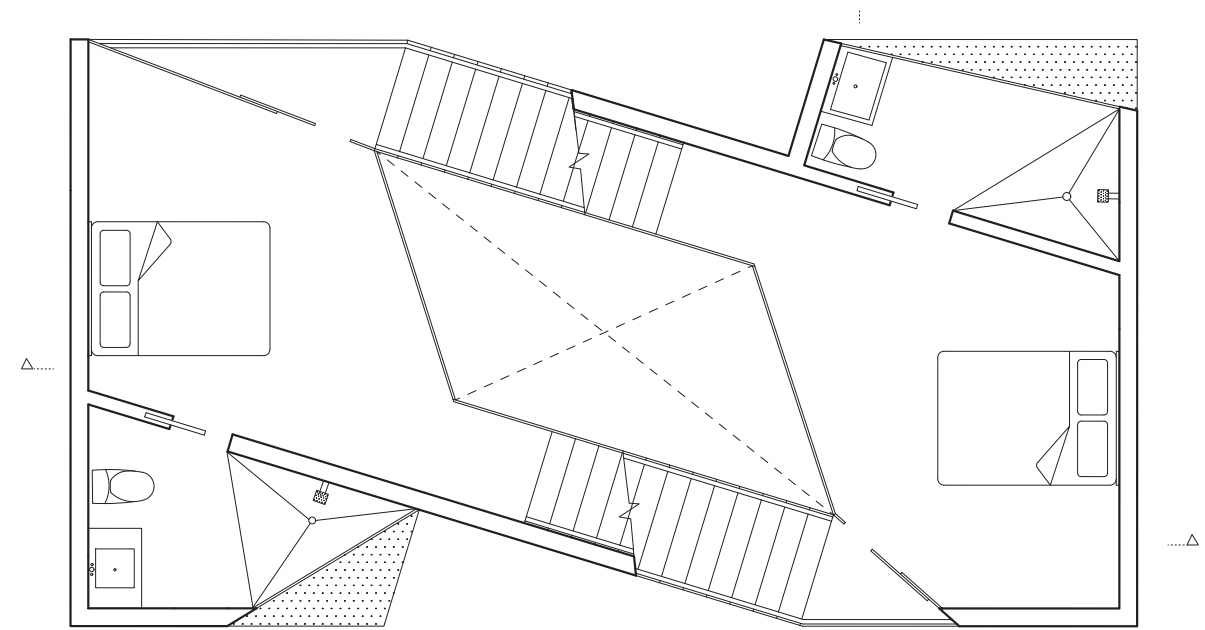
The unique design for the double-unit ADU begins with the stairs being the only sectional connection between the two sides. The stairs are duplicated one on top of the other in order to connect the crisscrossing apartments. To further explain the layout of the units, the bottom left kitchen and living room connect to the bedroom on the right side of the second level which then connects back to the roof on the left side. Which means that both units have bedrooms on the second floor diagonal from their kitchen and living rooms allowing for equality in terms of sunlight for each unit. The double-unit apartment has one central courtyard where the residents enter under the stairs and then find private entrances into their individual unit. Going along with the driving concept of connection around the stairs, the central courtyard allows for the two units to connect socially. The stairs have two materials, glass on the interior and a solid wall on the exterior-reinforcing my idea of connection and interaction within the central staircase.



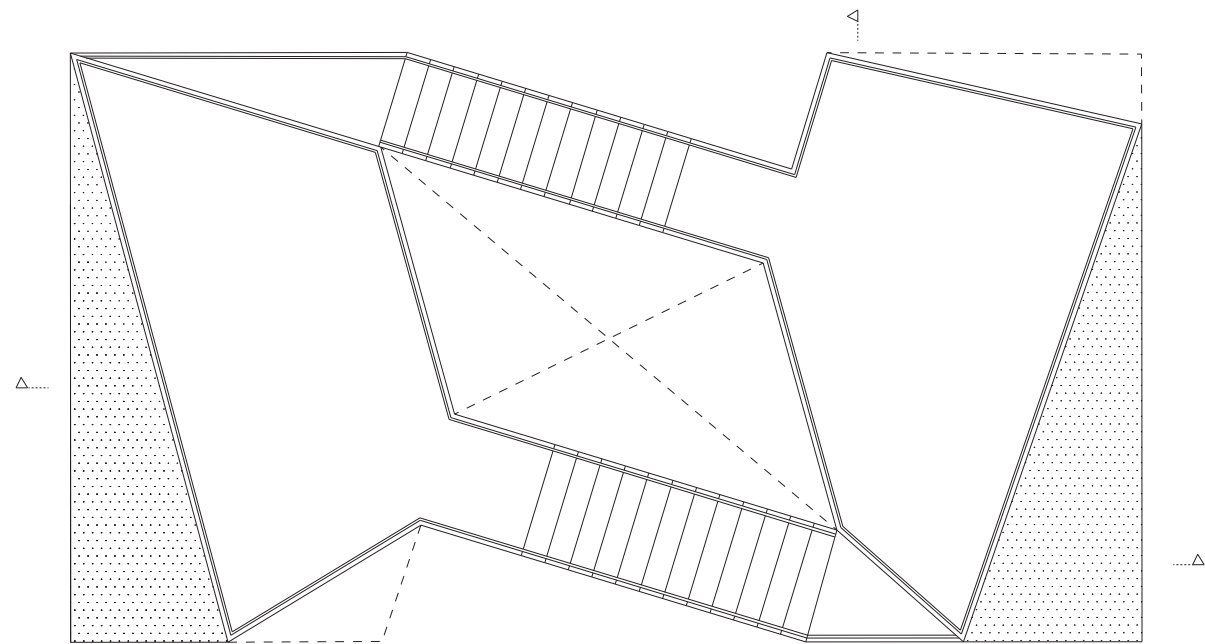


FIRST FLOOR | SITE PLAN

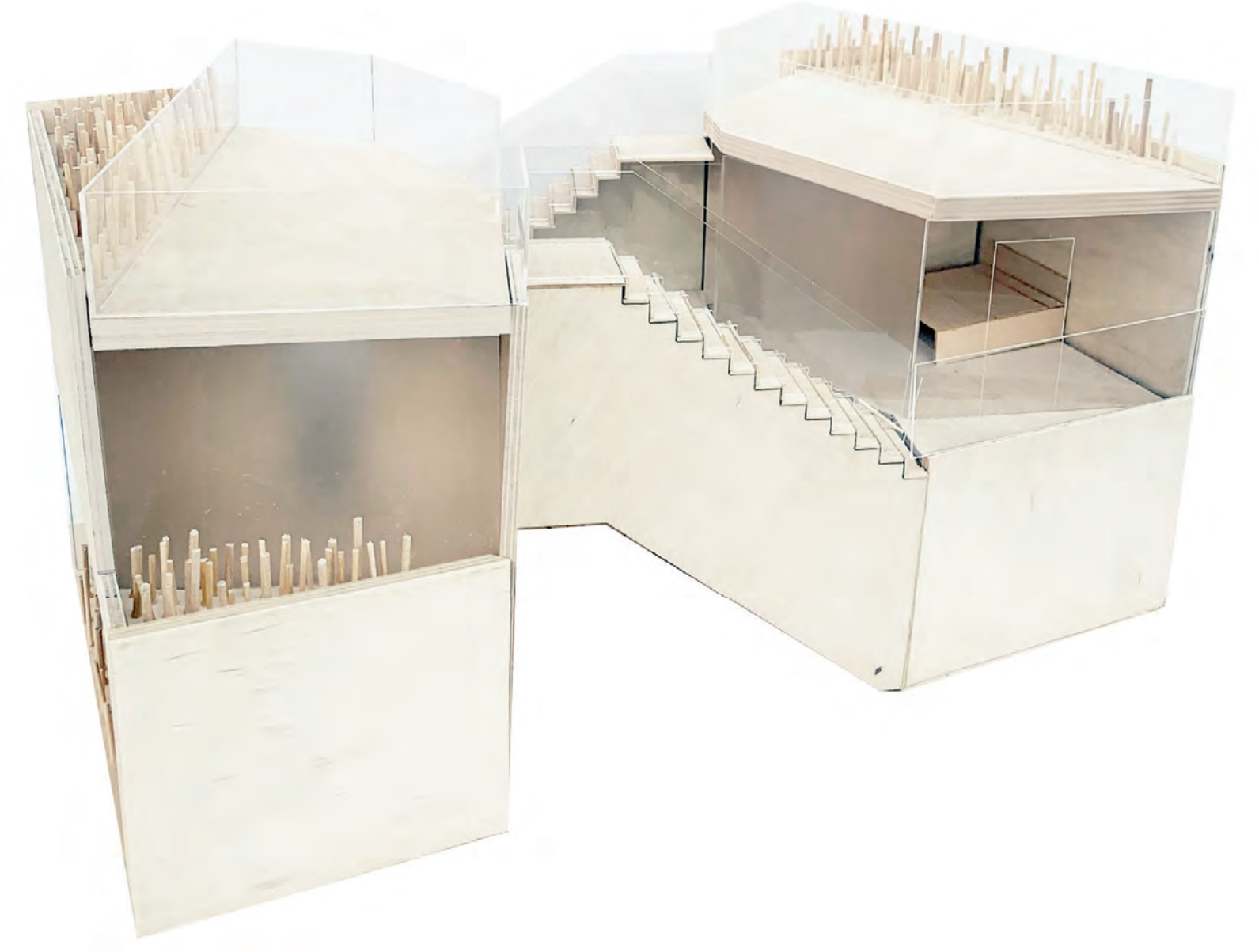


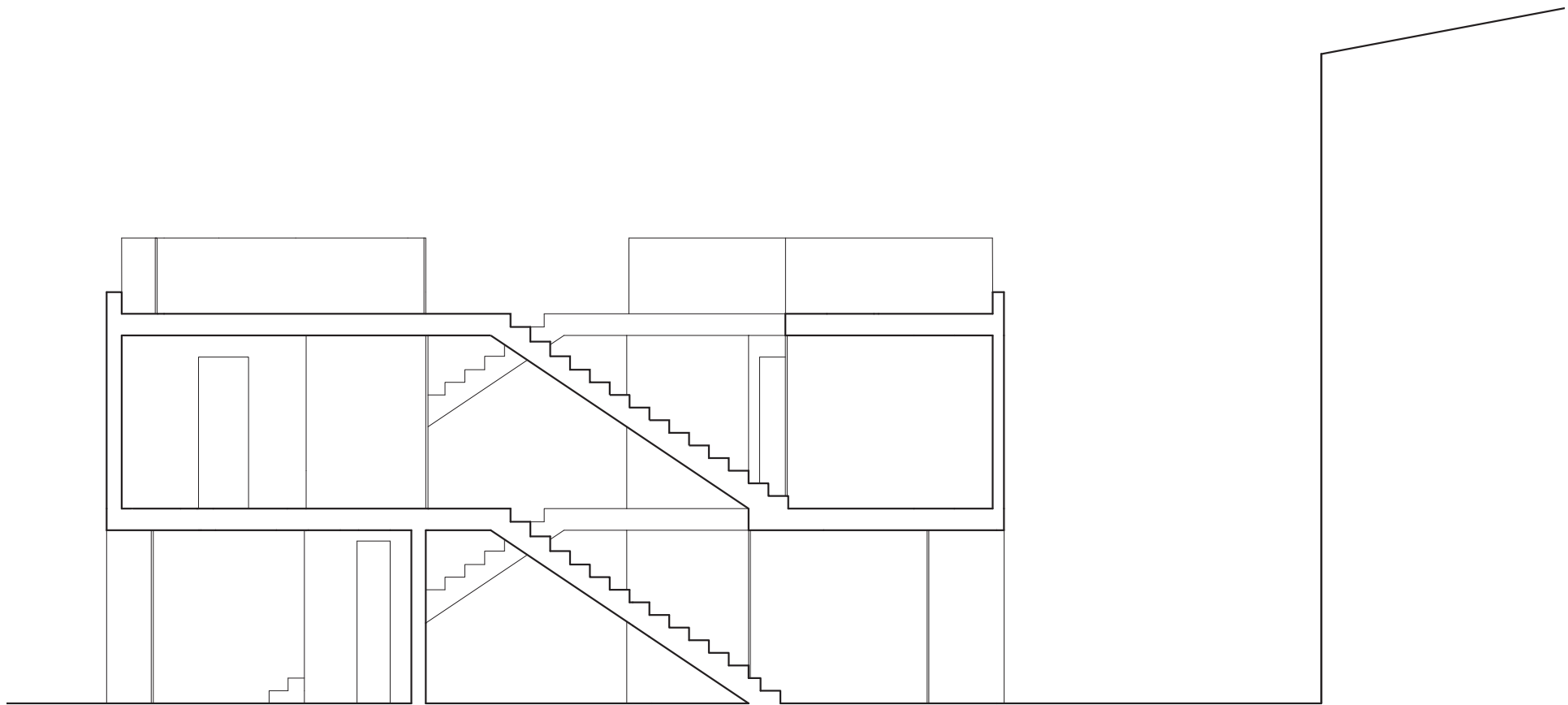


SECOND FLOOR



ROOF PLAN





EAST SECTION





CONTACT



mollygildar@gmail.com



(216) - 970 - 3273



mollygildardesigns.com



<https://www.instagram.com/mollygildardesigns/>

MGD

MOLLY GILDAR DESIGNS